

Archmodels vol. 254

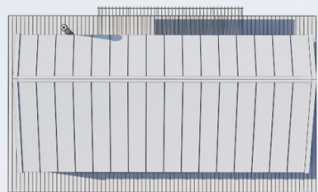
Archmodels vol. 254 includes 32 assets for your visualizations. We included 12 cabins and 20 modern houses that will fit any style and season. You will be able to create high quality exterior scenes with exceptional looking houses. It is a perfect start for your projects that will save you huge amount of time. The cabins and houses from this collection are prepared with a big attention to details so you can use them as the secondary or hero models.

FEATURES

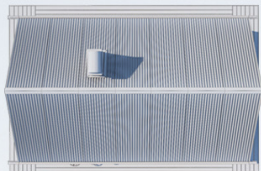
SETS:	32
COMPATIBILITY:	3ds Max 2014 and higher, Cinema 4D R19
RENDERERS:	V-Ray 3.6 or higher, Vray4C4D 3.6, Corona 5
FORMATS:	*.max, *.obj, *.fbx, *.c4d



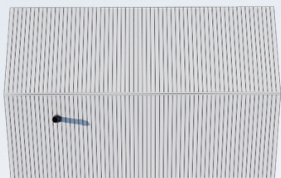
Archmodels vol. 254



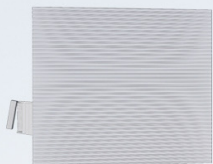
Archmodels vol. 254



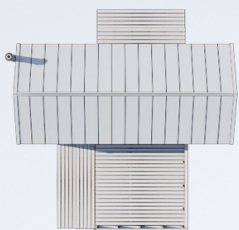
Archmodels vol. 254



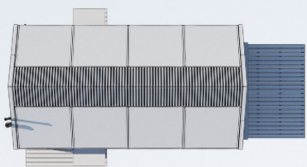
Archmodels vol. 254



Archmodels vol. 254



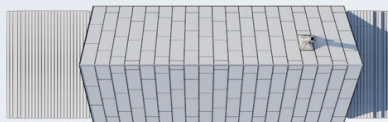
Archmodels vol. 254



Archmodels vol. 254



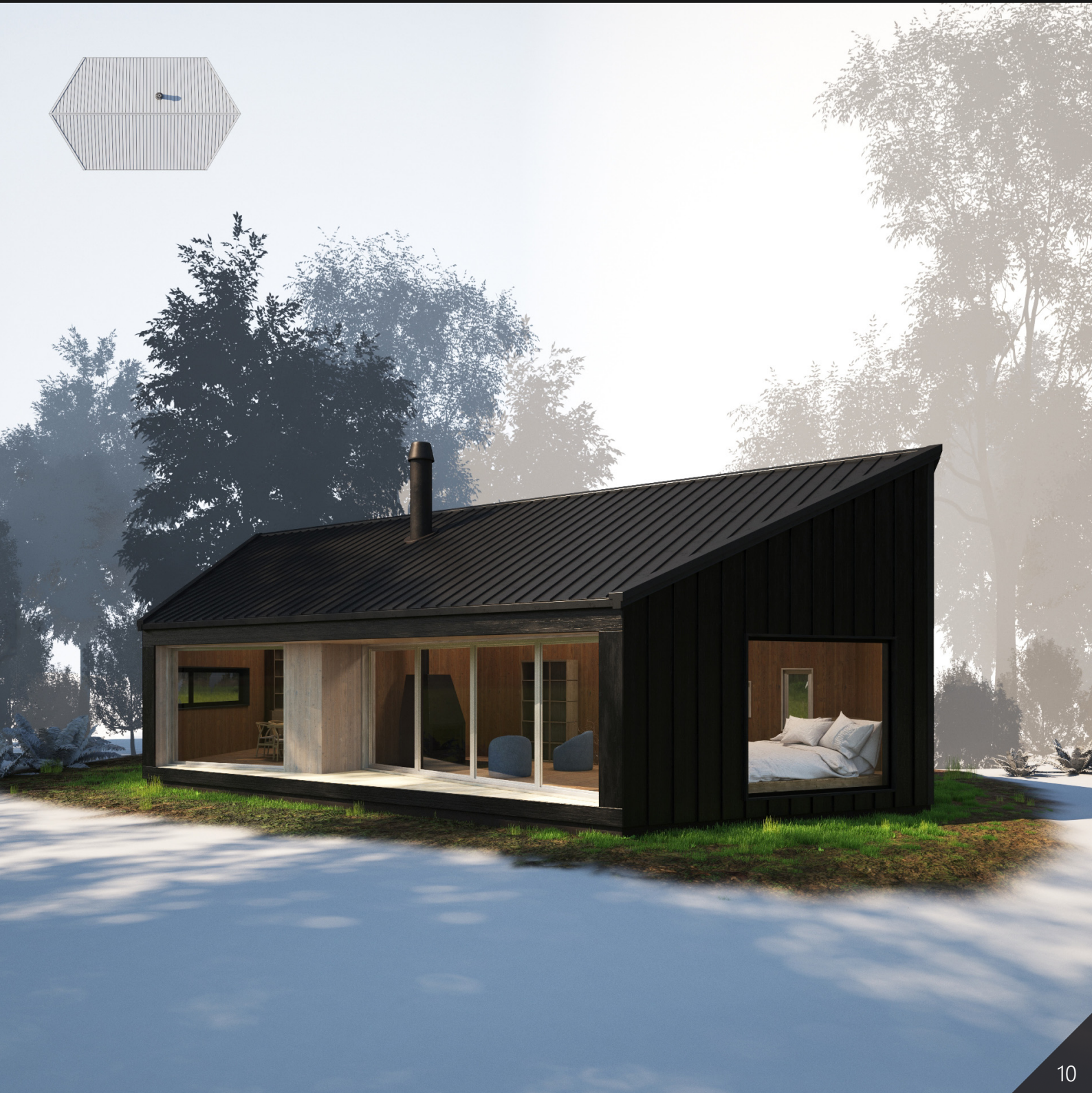
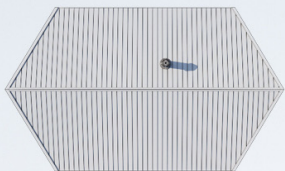
Archmodels vol. 254



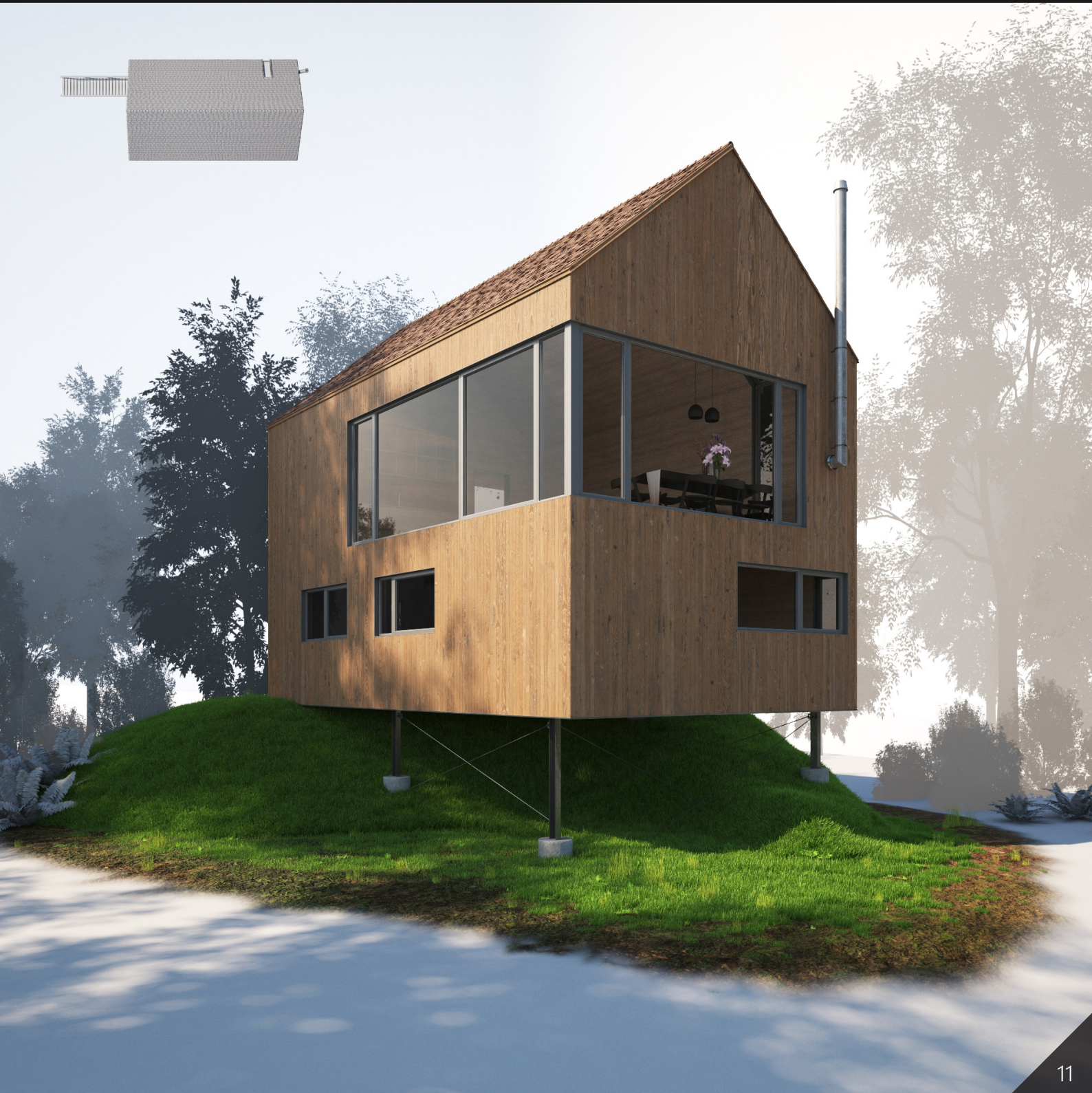
Archmodels vol. 254



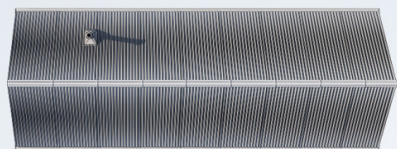
Archmodels vol. 254



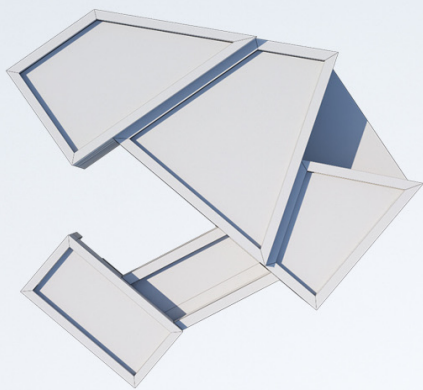
Archmodels vol. 254



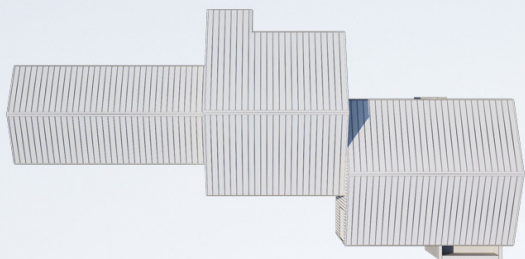
Archmodels vol. 254



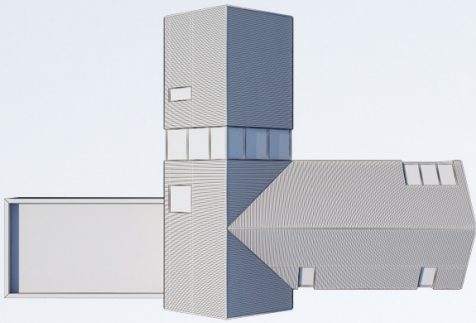
Archmodels vol. 254



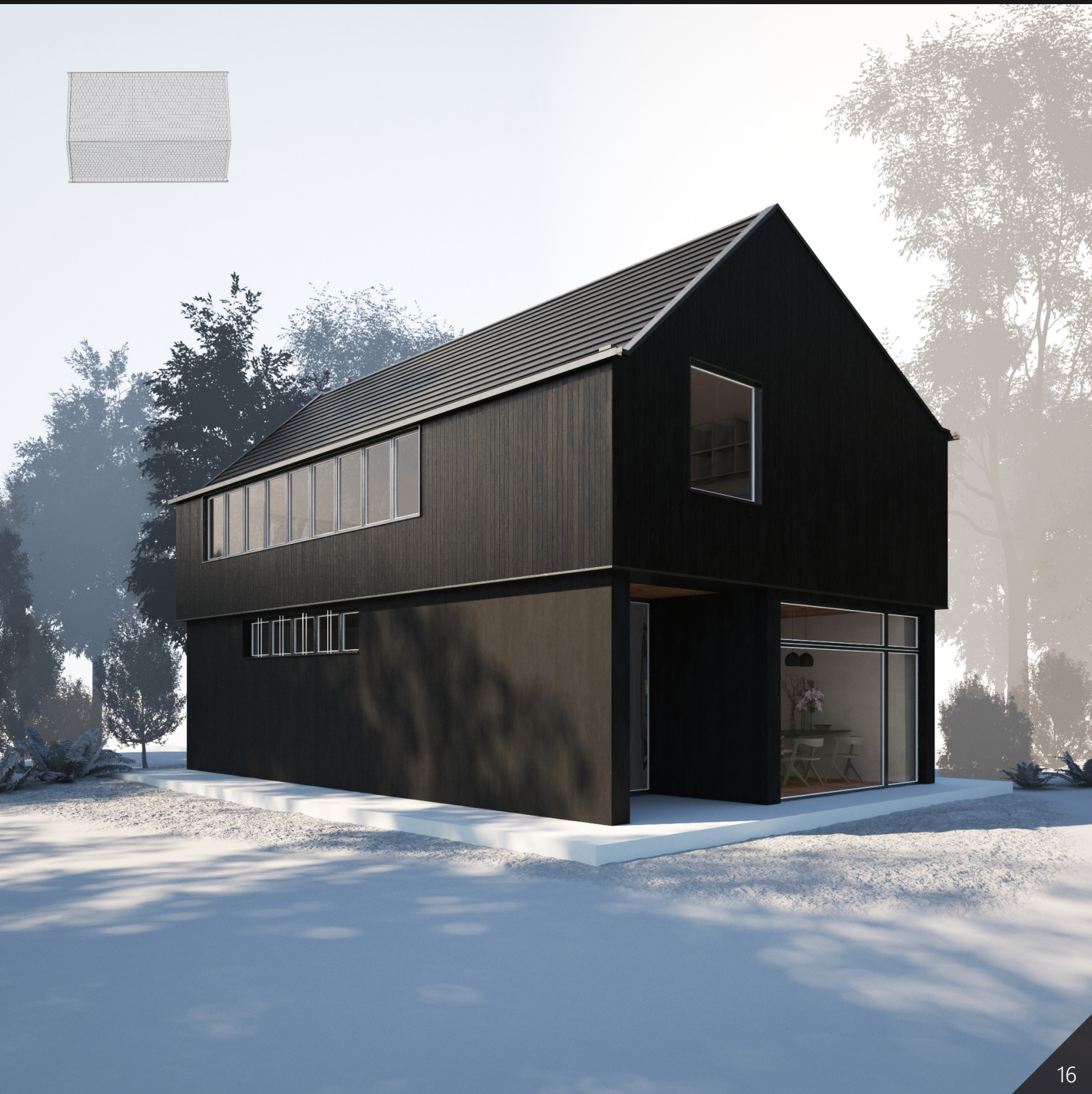
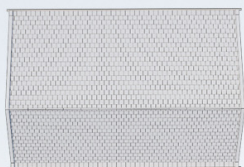
Archmodels vol. 254



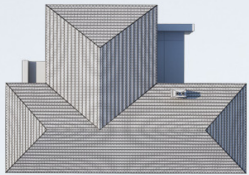
Archmodels vol. 254



Archmodels vol. 254



Archmodels vol. 254



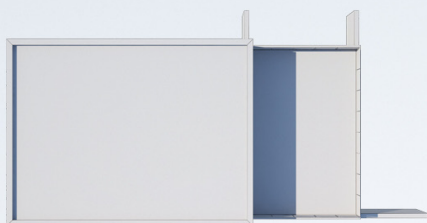
Archmodels vol. 254



Archmodels vol. 254



Archmodels vol. 254



Archmodels vol. 254



Archmodels vol. 254



Archmodels vol. 254



Archmodels vol. 254



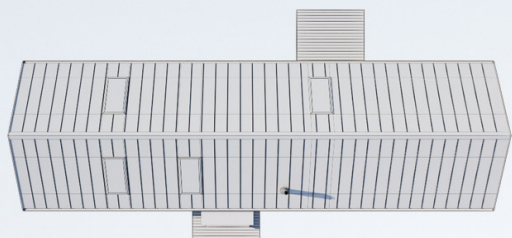
Archmodels vol. 254



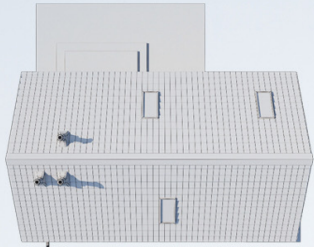
Archmodels vol. 254



Archmodels vol. 254



Archmodels vol. 254



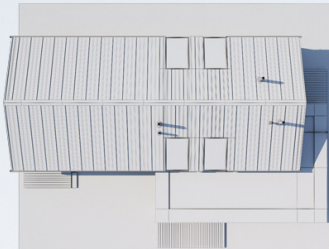
Archmodels vol. 254



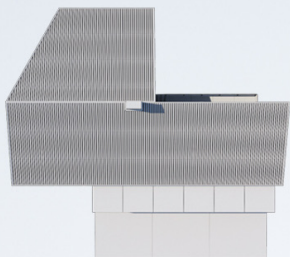
Archmodels vol. 254



Archmodels vol. 254



Archmodels vol. 254



Archmodels vol. 254

Thank you for your purchase!

We hope that this product will meet your expectations. We gave much importance to ensure that it meets the highest quality standards. If you have any questions regarding this product, please contact our Support Team: support@evermotion.org

Happy rendering!

