



DESCRIPTION

CGAxis Models Volume 56 - collection contains **81** highly detailed 3D models of food for your visualizations. Models are very realistic, scanned from real products and optimized. Most of them have only **10k polygons**. All are mapped and have materials and textures. Compatible with 3ds max 2010 or higher ,Cinema 4D R11 or higher and many others.

SPECIFICATION

Total size: 3.60 GB
Materias: YES
Textures: YES

FORMATS

*.max (Scanline)
*.max (MentalRay)
*.max (VRay)
*.c4d
*.c4d (VRay)
*.obj
*.fbx

All models, textures, renders, materials, hdri etc. which can be purchased/downloaded from www.cgaxis.com are on Royalty-Free non-exclusive license. License is personal and NON transferable. Models, textures, renders, materials, hdri etc. that You have purchased are non-exclusively licensed, NOT sold to You. You can use CGAxis products as a part of a game, if the products are contained inside a propriety format and displays inside the game during play. In this case, you have to add in the producer's section the information that "models by CGAXIS.com". You can sell/resell rendered moving or still images, resold as a part of a feature film, movie advertisement etc. You have a possibility to publish renders in a book, on a poster, t-shirt, magazine, cover or any other item. You have the right to use your renders in every way - charge a fee for them, modify them, to make postproduction etc.

Bread with mushrooms and cheese



Poly: 7295

Vert: 7299

FILENAME: CGAXIS_MODELS_56_01

Bitten bread with mushrooms and cheese



Poly: 10220

Vert: 10223

FILENAME: CGAXIS_MODELS_56_02

Sandwich with cottage cheese



Poly: 32214

Vert: 32240

FILENAME: CGAXIS_MODELS_56_03

Pastry with spinach



Poly: 11086

Vert: 11089

FILENAME: CGAXIS_MODELS_56_04

Bitten pastry with spinach



Poly: 14321

Vert: 14323

FILENAME: CGAXIS _ MODELS _ 56 _ 05

Beef in tortilla



Poly: 9429

Vert: 9433

FILENAME: CGAXIS_MODELS_56_06

Bitten beef in tortilla



Poly: 11994

Vert: 12001

FILENAME: CGAXIS_MODELS_56_07

Roll with sausage



Poly: 9644

Vert: 9648

FILENAME: CGAXIS _ MODELS _ 56 _ 08

Bitten Roll with sausage



Poly: 10129

Vert: 10132

FILENAME: CGAXIS _ MODELS _ 56 _ 09

Pastry with meat



Poly: 8346

Vert: 8352

FILENAME: CGAXIS_MODELS_56_10

Bitten pastry with meat



Poly: 8928

Vert: 8934

FILENAME: CGAXIS_MODELS_56_11

Pizza on wooden board



Poly: 10024

Vert: 10026

FILENAME: CGAXIS _ MODELS _ 56 _ 12

Pizza slices on wooden board



Poly: 13022

Vert: 13047

FILENAME: CGAXIS_MODELS_56_13

Pizza slice



Poly: 7931

Vert: 7958

FILENAME: CGAXIS _ MODELS _ 56 _ 14

Bitten pizza slice



Poly: 6915

Vert: 6918

FILENAME: CGAXIS_MODELS_56_15

Triangle with salami and cheese



Poly: 13273

Vert: 13227

FILENAME: CGAXIS _ MODELS _ 56 _ 16

Bitten triangle with salami and cheese



Poly: 10773

Vert: 10773

FILENAME: CGAXIS_MODELS_56_17

Baguette baked with mushrooms



Poly: 10431

Vert: 10430

FILENAME: CGAXIS_MODELS_56_18

Bitten baguette baked with mushrooms



Poly: 13362

Vert: 13396

FILENAME: CGAXIS_MODELS_56_19

Cupcake with cream and fruits



Poly: 16128

Vert: 16132

FILENAME: CGAXIS _ MODELS _ 56 _ 20

Cake with icing



Poly: 30093

Vert: 30105

FILENAME: CGAXIS_MODELS_56_21

Two slices of cake with icing



Poly: 22482

Vert: 22498

FILENAME: CGAXIS_MODELS_56_22

Small cakes with coconut chips



Poly: 9643

Vert: 9650

FILENAME: CGAXIS_MODELS_56_23

Bitten small cake with coconut chips**Poly: 8837****Vert: 8843****FILENAME: CGAXIS_MODELS_56_24**

Meringues



Poly: 20404

Vert: 20412

FILENAME: CGAXIS _ MODELS _ 56 _ 25

Baked roll with jam



Poly: 18220

Vert: 18170

FILENAME: CGAXIS_MODELS_56_26

Bitten baked roll with jam



Poly: 13743

Vert: 13744

FILENAME: CGAXIS_MODELS_56_27

Bitten baked roll with jam



Poly: 10156

Vert: 10167

FILENAME: CGAXIS _ MODELS _ 56 _ 28

Roll with pudding



Poly: 8967

Vert: 8982

FILENAME: CGAXIS_MODELS_56_29

Bitten roll with pudding



Poly: 10855

Vert: 10857

FILENAME: CGAXIS_MODELS_56_30

Two-color cookies



Poly: 20732

Vert: 20742

FILENAME: CGAXIS _ MODELS _ 56 _ 31

Bitten two-color cookies



Poly: 15713

Vert: 15721

FILENAME: CGAXIS _ MODELS _ 56 _ 32

Cookies with chocolate



Poly: 14188

Vert: 14196

FILENAME: CGAXIS _ MODELS _ 56 _ 33

Bitten chocolate cookies



Poly: 11618

Vert: 11624

FILENAME: CGAXIS_MODELS_56_34

Griddle cake with cream



Poly: 9889

Vert: 9893

FILENAME: CGAXIS_MODELS_56_35

Bitten griddle cake with cream



Poly: 12466

Vert: 12470

FILENAME: CGAXIS_MODELS_56_36

Piece of cream pie



Poly: 15098

Vert: 15102

FILENAME: CGAXIS_MODELS_56_37

Half-eaten piece of cream pie



Poly: 20878

Vert: 20905

FILENAME: CGAXIS _ MODELS _ 56 _ 38

Piece of chocolate cake



Poly: 10018

Vert: 10030

FILENAME: CGAXIS_MODELS_56_39

Half-eaten piece of chocolate cake



Poly: 11387

Vert: 11391

FILENAME: CGAXIS_MODELS_56_40

Donut with chocolate



Poly: 13609

Vert: 13618

FILENAME: CGAXIS _ MODELS _ 56 _ 41

Bitten donut with chocolate



Poly: 9254

Vert: 9258

FILENAME: CGAXIS_MODELS_56_42

Chocolate muffin



Poly: 9282

Vert: 9286

FILENAME: CGAXIS_MODELS_56_43

Bitten chocolate muffin



Poly: 7926

Vert: 7930

FILENAME: CGAXIS_MODELS_56_44

Berliner



Poly: 5539

Vert: 5543

FILENAME: CGAXIS_MODELS_56_45

Bitten berliner**Poly: 6691****Vert: 6695****FILENAME: CGAXIS _ MODELS _ 56 _ 46**

Tree cake

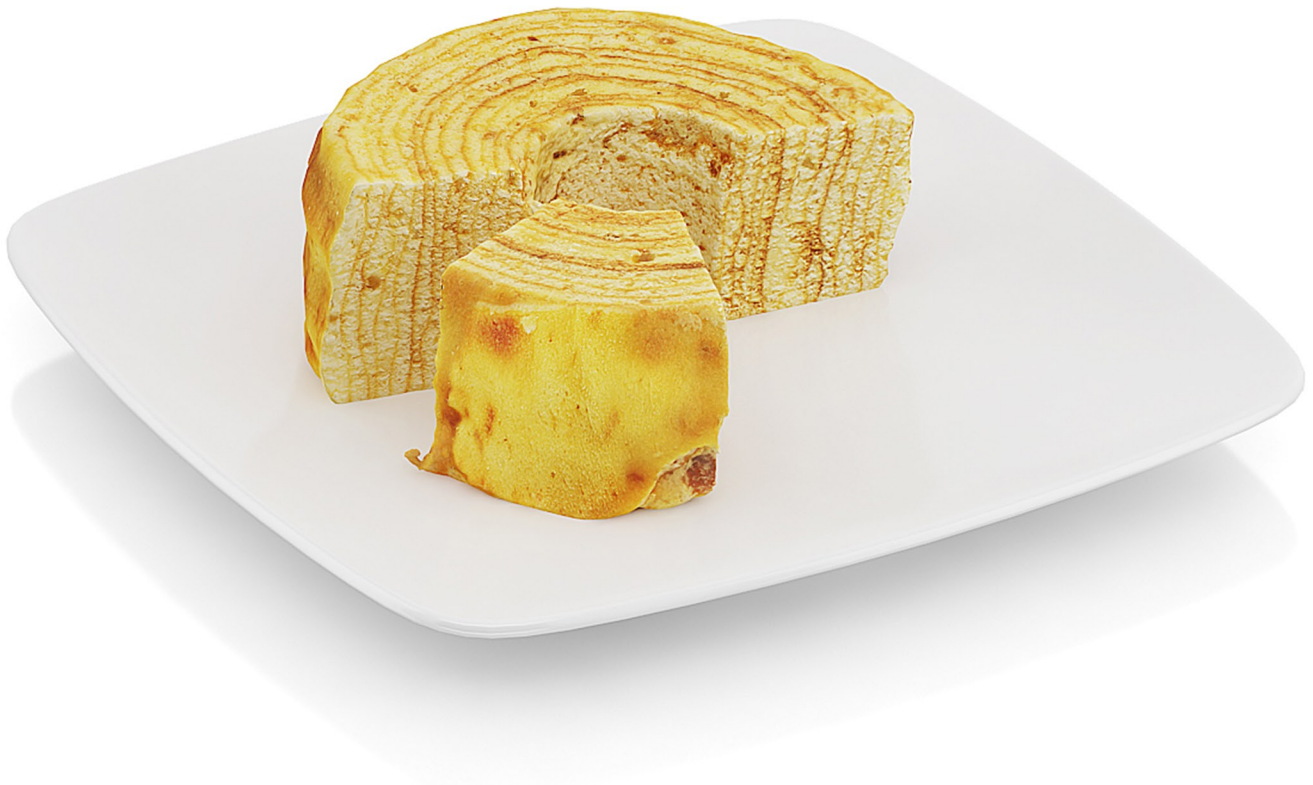


Poly: 7077

Vert: 7079

FILENAME: CGAXIS_MODELS_56_47

Half-eaten tree cake



Poly: 12211

Vert: 12217

FILENAME: CGAXIS_MODELS_56_48

Bitten sweetroll



Poly: 11861

Vert: 11865

FILENAME: CGAXIS_MODELS_56_49

Cream pie with chocolate icing



Poly: 13882

Vert: 13888

FILENAME: CGAXIS_MODELS_56_50

Half-eaten cream pie with chocolate icing



Poly: 8530

Vert: 8534

FILENAME: CGAXIS_MODELS_56_51

Two bananas



Poly: 12326

Vert: 12332

FILENAME: CGAXIS _ MODELS _ 56 _ 52

Peeled banana



Poly: 15092

Vert: 15095

FILENAME: CGAXIS_MODELS_56_53

Grapefruits in glass bowl



Poly: 11504

Vert: 11514

FILENAME: CGAXIS_MODELS_56_54

Halved grapefruit



Poly: 7465

Vert: 7471

FILENAME: CGAXIS_MODELS_56_55

Apples in glass bowl



Poly: 15944

Vert: 15958

FILENAME: CGAXIS_MODELS_56_56

Halved apple



Poly: 7301

Vert: 7307

FILENAME: CGAXIS_MODELS_56_57

Kiwi fruits in glass bowl



Poly: 19496

Vert: 19522

FILENAME: CGAXIS_MODELS_56_58

Halved kiwi fruit



Poly: 7013

Vert: 7019

FILENAME: CGAXIS _ MODELS _ 56 _ 59

Oranges in glass bowl



Poly: 10104

Vert: 10114

FILENAME: CGAXIS_MODELS_56_60

Halved orange



Poly: 7396

Vert: 7402

FILENAME: CGAXIS _ MODELS _ 56 _ 61

Roast pork



Poly: 17149

Vert: 17150

FILENAME: CGAXIS _ MODELS _ 56 _ 62

Sausage



Poly: 7848

Vert: 7852

FILENAME: CGAXIS _ MODELS _ 56 _ 63

Terrine



Poly: 17831

Vert: 17852

FILENAME: CGAXIS_MODELS_56_64

Ham



Poly: 14773

Vert: 14777

FILENAME: CGAXIS_MODELS_56_65

Sliced ham

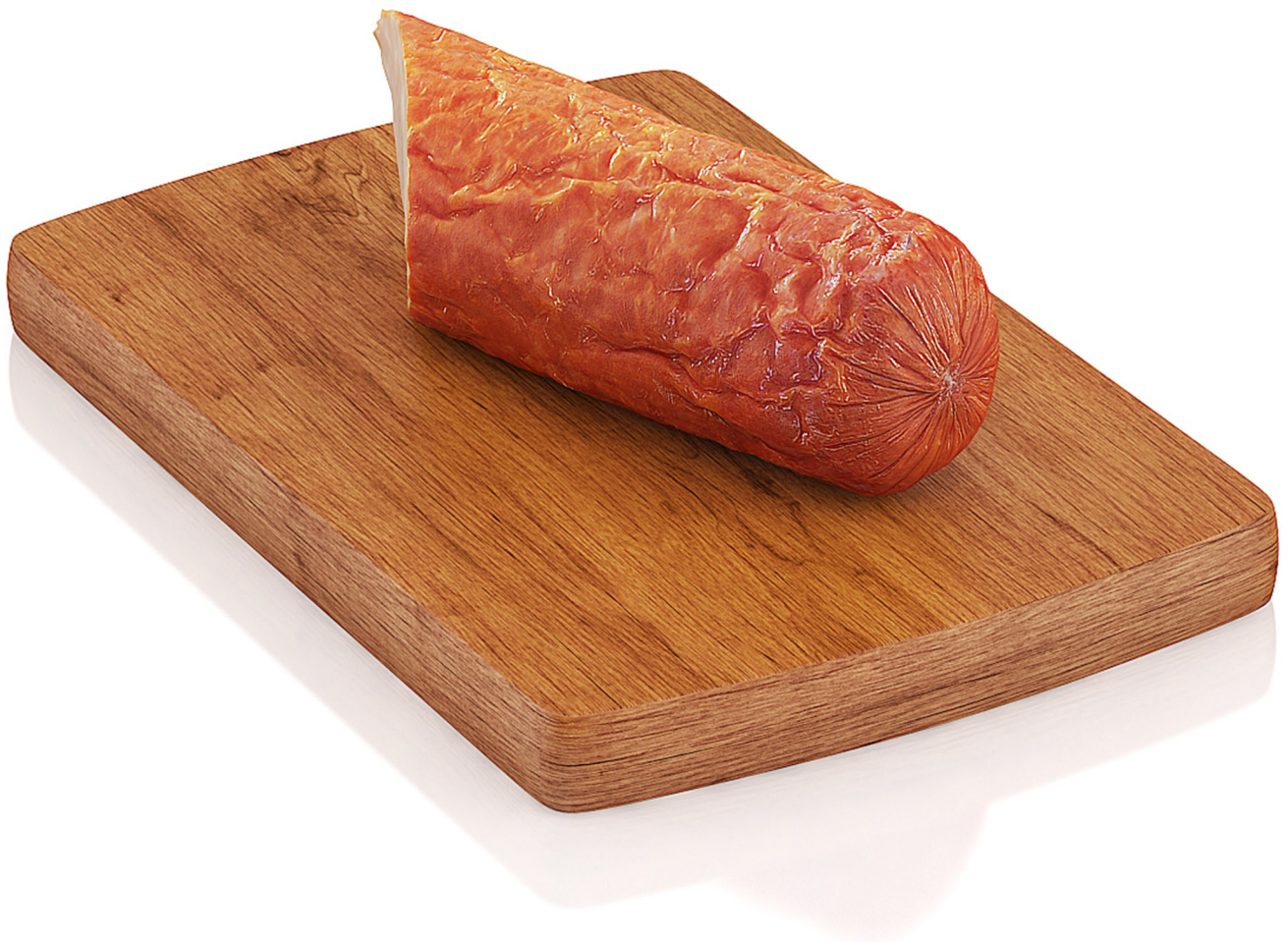


Poly: 17498

Vert: 17508

FILENAME: CGAXIS_MODELS_56_66

Large sausage



Poly: 9410

Vert: 9414

FILENAME: CGAXIS_MODELS_56_67

Brie cheese



Poly: 7908

Vert: 7911

FILENAME: CGAXIS_MODELS_56_68

Cutted brie cheese



Poly: 8566

Vert: 8570

FILENAME: CGAXIS _ MODELS _ 56 _ 69

Bagel with poppy seeds



Poly: 8584

Vert: 8584

FILENAME: CGAXIS_MODELS_56_70

Bitten bagel with poppy seeds



Poly: 12314

Vert: 12314

FILENAME: CGAXIS_MODELS_56_71

Bitten bagel with sesame seeds



Poly: 9701

Vert: 9705

FILENAME: CGAXIS_MODELS_56_72

Wholegrain roll



Poly: 15510

Vert: 15522

FILENAME: CGAXIS _ MODELS _ 56 _ 73

Bitten wholegrain roll



Poly: 18616

Vert: 18665

FILENAME: CGAXIS_MODELS_56_74

Challah bread



Poly: 13340

Vert: 13309

FILENAME: CGAXIS_MODELS_56_75

Sliced challah bread



Poly: 20235

Vert: 20259

FILENAME: CGAXIS_MODELS_56_76

Sliced bread



Poly: 21388

Vert: 21393

FILENAME: CGAXIS_MODELS_56_77

Wholemeal bread



Poly: 8171

Vert: 8175

FILENAME: CGAXIS_MODELS_56_78

Sliced wholemeal bread**Poly: 16502****Vert: 16510****FILENAME: CGAXIS_MODELS_56_79**

Long roll with grains



Poly: 12956

Vert: 12960

FILENAME: CGAXIS_MODELS_56_80

Half-eaten long roll with grains



Poly: 13356

Vert: 13355

FILENAME: CGAXIS_MODELS_56_81