



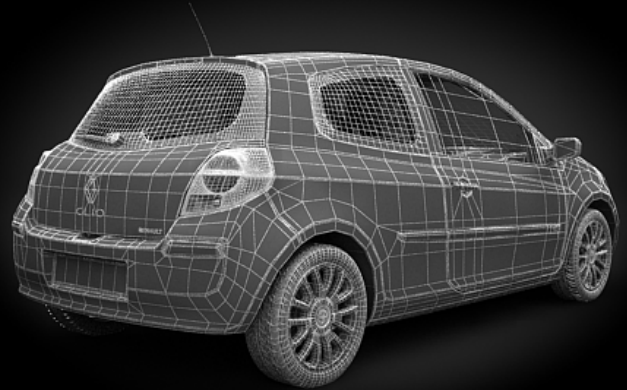
M O D E L 0 1



emodelscars

VOLUME 01

ORIGINAL ONLY FROM EVERMOTION



vray



maxwell



mentalray



EVERMOTION
WWW.EVERMOTION.ORG

Software and models © 2007 EVERMOTION. EVERMOTION, the EVERMOTION logo, HDMODELS, and the HDMODELS logo are trademarks or registered trademarks of Evermotion Inc. in the U.S. and/or other countries. All rights reserved. All *.max, *.3ds, *.obj, *.fbx and *.dxf models included on this DVDROM with data are an integral part of "HDmodels cars volume 1" and the resale of this data is strictly prohibited. All models can be used for commercial purposes only by owners who bought this DVDROM. The sharing of DVDROM data is strictly prohibited unless that user has written authorization from EVERMOTION.



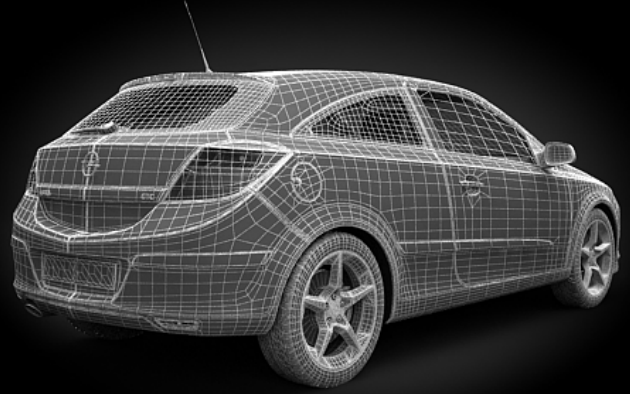
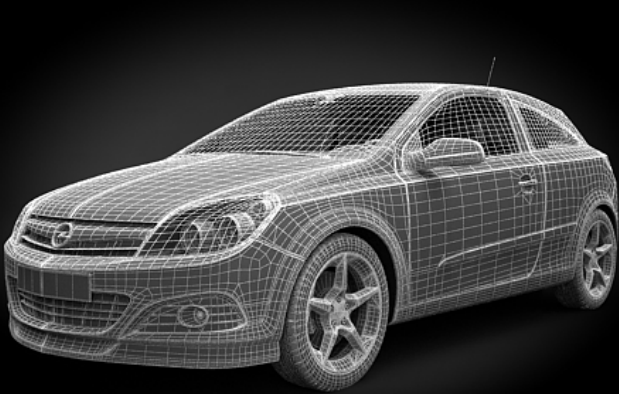
M O D E L 0 2



emodscars

VOLUME 01

ORIGINAL ONLY FROM EVERMOTION



vray



maxwell



mentalray



Software and models © 2007 EVERMOTION. EVERMOTION, the EVERMOTION logo, HDMODELS, and the HDMODELS logo are trademarks or registered trademarks of Evermotion Inc. in the U.S. and/or other countries. All rights reserved. All *.max, *.3ds, *.obj, *.fbx and *.dxf models included on this DVDROM with data are an integral part of "HDmodels cars volume 1" and the resale of this data is strictly prohibited. All models can be used for commercial purposes only by owners who bought this DVDROM. The sharing of DVDROM data is strictly prohibited unless that user has written authorization from EVERMOTION.



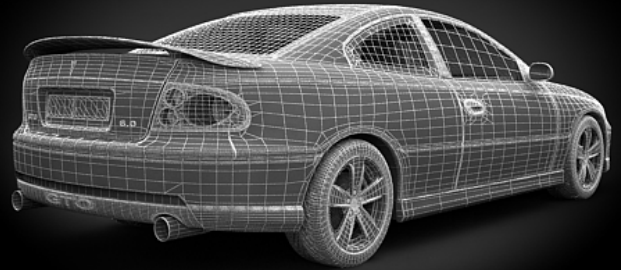
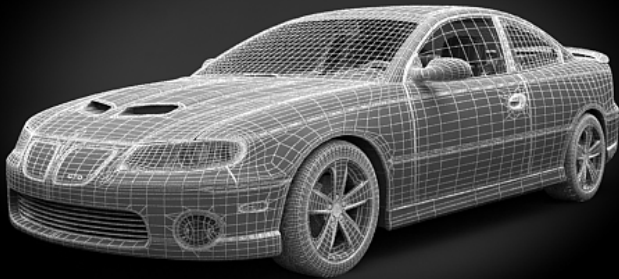
M O D E L 0 3



emodscars

VOLUME 01

ORIGINAL ONLY FROM EVERMOTION



vray



maxwell



mentalray



EVERMOTION
WWW.EVERMOTION.ORG

Software and models © 2007 EVERMOTION. EVERMOTION, the EVERMOTION logo, HDMODELS, and the HDMODELS logo are trademarks or registered trademarks of Evermotion Inc. in the U.S. and/or other countries. All rights reserved. All *.max, *.3ds, *.obj, *.fbx and *.dxf models included on this DVDROM with data are an integral part of "HDmodels cars volume 1" and the resale of this data is strictly prohibited. All models can be used for commercial purposes only by owners who bought this DVDROM. The sharing of DVDROM data is strictly prohibited unless that user has written authorization from EVERMOTION.



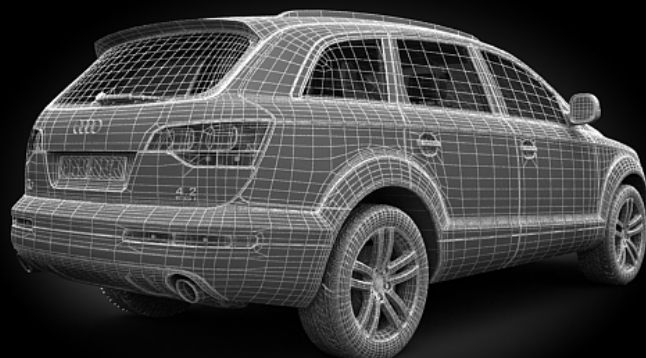
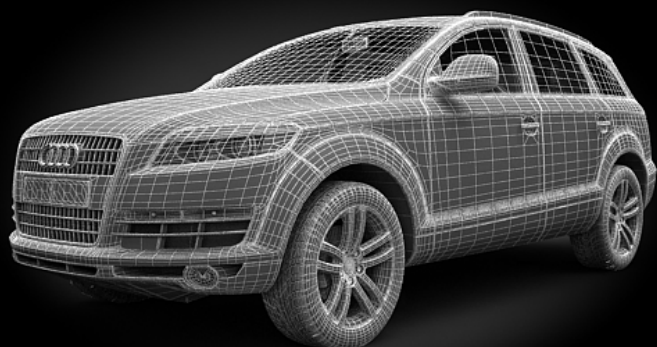
M O D E L 0 4



emodscars

VOLUME 01

ORIGINAL ONLY FROM EVERMOTION



vray



maxwell



mentalray



EVERMOTION
WWW.EVERMOTION.ORG

Software and models © 2007 EVERMOTION. EVERMOTION, the EVERMOTION logo, HDMODELS, and the HDMODELS logo are trademarks or registered trademarks of Evermotion Inc. in the U.S. and/or other countries. All rights reserved. All *.max, *.3ds, *.obj, *.fbx and *.dxf models included on this DVDROM with data are an integral part of "HDMODELS volume 1" and the resale of this data is strictly prohibited. All models can be used for commercial purposes only by owners who bought this DVDROM. The sharing of DVDROM data is strictly prohibited unless that user has written authorization from EVERMOTION.



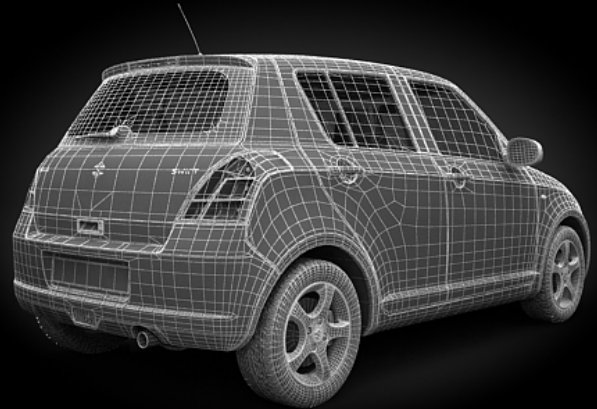
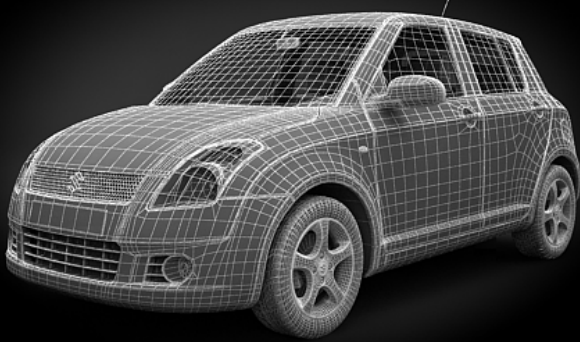
M O D E L 0 5



emodscars

VOLUME 01

ORIGINAL ONLY FROM EVERMOTION



vray



maxwell



mentalray



EVERMOTION
WWW.EVERMOTION.ORG

Software and models © 2007 EVERMOTION. EVERMOTION, the EVERMOTION logo, HDMODELS, and the HDMODELS logo are trademarks or registered trademarks of Evermotion Inc. in the U.S. and/or other countries. All rights reserved. All *.max, *.3ds, *.obj, *.fbx and *.dxf models included on this DVDROM with data are an integral part of "HDmodels cars volume 1" and the resale of this data is strictly prohibited. All models can be used for commercial purposes only by owners who bought this DVDROM. The sharing of DVDROM data is strictly prohibited unless that user has written authorization from EVERMOTION.



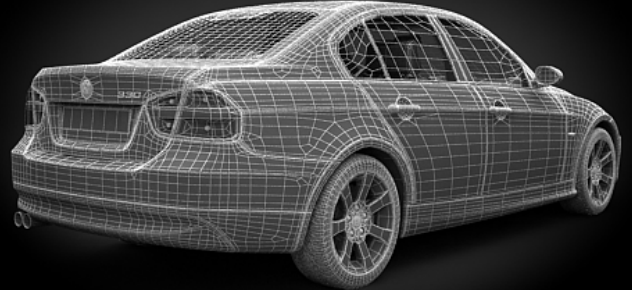
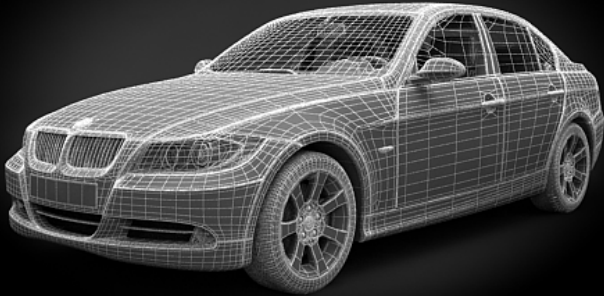
M O D E L 0 6



emodscars

VOLUME 01

ORIGINAL ONLY FROM EVERMOTION



vray



maxwell



mentalray



EVERMOTION
WWW.EVERMOTION.ORG

Software and models © 2007 EVERMOTION. EVERMOTION, the EVERMOTION logo, HDMODELS, and the HDMODELS logo are trademarks or registered trademarks of Evermotion Inc. in the U.S. and/or other countries. All rights reserved. All *.max, *.3ds, *.obj, *.fbx and *.dxf models included on this DVDROM with data are an integral part of "HDmodels cars volume 1" and the resale of this data is strictly prohibited. All models can be used for commercial purposes only by owners who bought this DVDROM. The sharing of DVDROM data is strictly prohibited unless that user has written authorization from EVERMOTION.



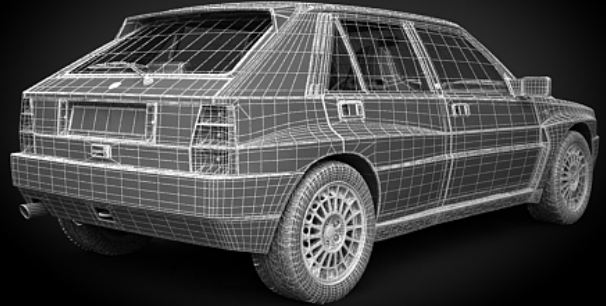
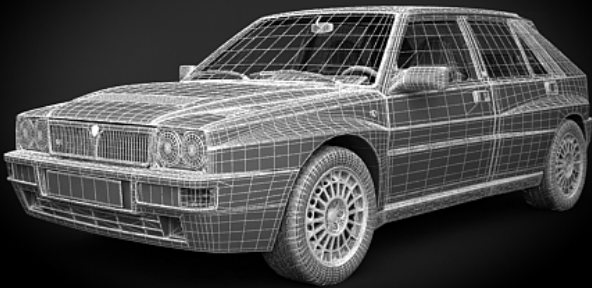
M O D E L 0 7



emodscars

VOLUME 01

ORIGINAL ONLY FROM EVERMOTION



vray



maxwell



mentalray



EVERMOTION
WWW.EVERMOTION.ORG

Software and models © 2007 EVERMOTION. EVERMOTION, the EVERMOTION logo, HDMODELS, and the HDMODELS logo are trademarks or registered trademarks of Evermotion Inc. in the U.S. and/or other countries. All rights reserved. All *.max, *.3ds, *.obj, *.fbx and *.dxf models included on this DVDROM with data are an integral part of "HDmodels cars volume 1" and the resale of this data is strictly prohibited. All models can be used for commercial purposes only by owners who bought this DVDROM. The sharing of DVDROM data is strictly prohibited unless that user has written authorization from EVERMOTION.

emodscars

VOLUME 01

ORIGINAL ONLY FROM EVERMOTION



M O D E L 0 8



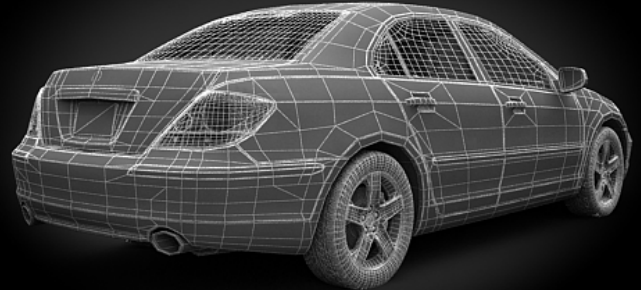
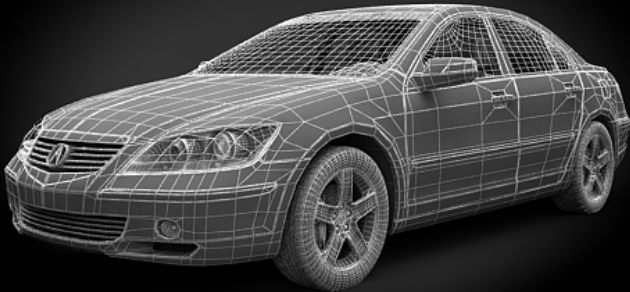
EVERMOTION
WWW.EVERMOTION.ORG

Software and models © 2007 EVERMOTION. EVERMOTION, the EVERMOTION logo, HDMODELS, and the HDMODELS logo are trademarks or registered trademarks of Evermotion Inc. in the U.S. and/or other countries. All rights reserved. All *.max, *.3ds, *.obj, *.fbx and *.dxf models included on this DVDROM with data are an integral part of "HDmodels cars volume 1" and the resale of this data is strictly prohibited. All models can be used for commercial purposes only by owners who bought this DVDROM. The sharing of DVDROM data is strictly prohibited unless that user has written authorization from EVERMOTION.

emodscars

VOLUME 01

ORIGINAL ONLY FROM EVERMOTION



vray



maxwell



mentalray



EVERMOTION
WWW.EVERMOTION.ORG

Software and models © 2007 EVERMOTION. EVERMOTION, the EVERMOTION logo, HDMODELS, and the HDMODELS logo are trademarks or registered trademarks of Evermotion Inc. in the U.S. and/or other countries. All rights reserved. All *.max, *.3ds, *.obj, *.fbx and *.dxf models included on this DVDROM with data are an integral part of "HdmodelsCars volume 1" and the resale of this data is strictly prohibited. All models can be used for commercial purposes only by owners who bought this DVDROM. The sharing of DVDROM data is strictly prohibited unless that user has written authorization from EVERMOTION.



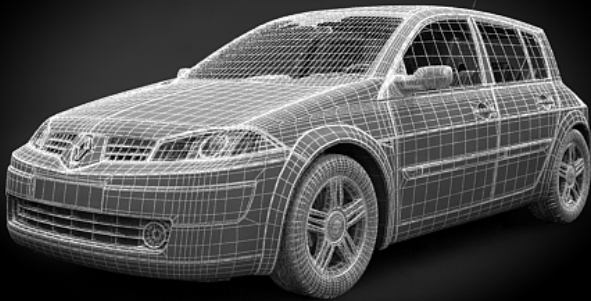
M O D E L 0 9



emodscars

VOLUME 01

ORIGINAL ONLY FROM EVERMOTION



vray



maxwell



mentalray



EVERMOTION
WWW.EVERMOTION.ORG

Software and models © 2007 EVERMOTION. EVERMOTION, the EVERMOTION logo, HDMODELS, and the HDMODELS logo are trademarks or registered trademarks of Evermotion Inc. in the U.S. and/or other countries. All rights reserved. All *.max, *.3ds, *.obj, *.fbx and *.dxf models included on this DVDROM with data are an integral part of "HDMODELSCARS volume 1" and the resale of this data is strictly prohibited. All models can be used for commercial purposes only by owners who bought this DVDROM. The sharing of DVDROM data is strictly prohibited unless that user has written authorization from EVERMOTION.



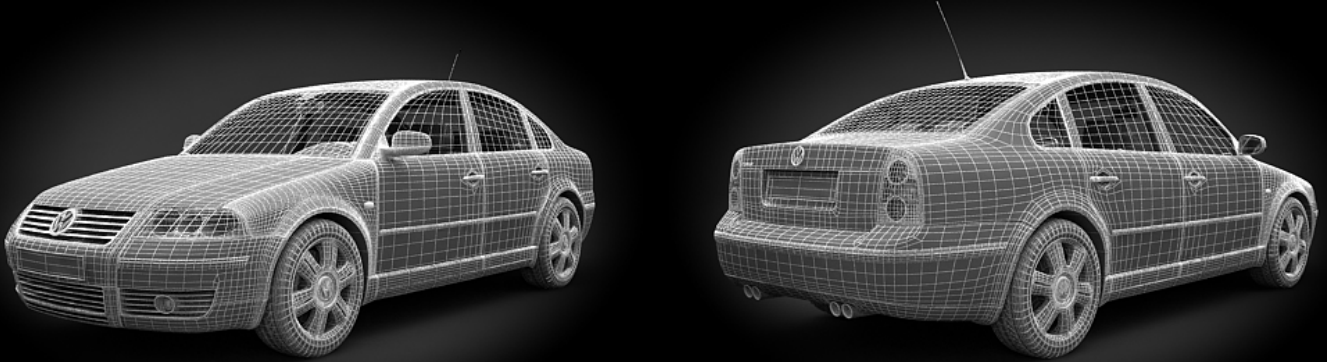
M O D E L 1 0



emodscars

VOLUME 01

ORIGINAL ONLY FROM EVERMOTION



vray



maxwell



mentalray



Software and models © 2007 EVERMOTION. EVERMOTION, the EVERMOTION logo, HDMODELS, and the HDMODELS logo are trademarks or registered trademarks of Evermotion Inc. in the U.S. and/or other countries. All rights reserved. All *.max, *.3ds, *.obj, *.fbx and *.dxf models included on this DVDROM with data are an integral part of "HDMODELScars volume 1" and the resale of this data is strictly prohibited. All models can be used for commercial purposes only by owners who bought this DVDROM. The sharing of DVDROM data is strictly prohibited unless that user has written authorization from EVERMOTION.